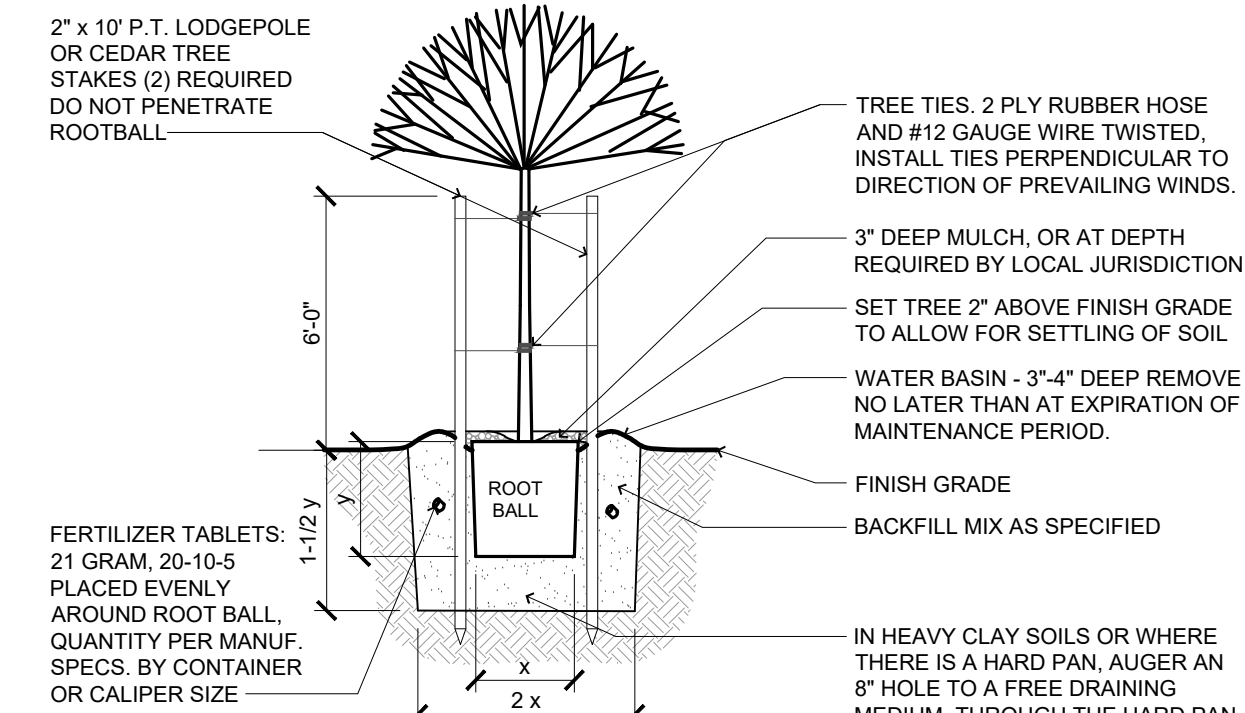
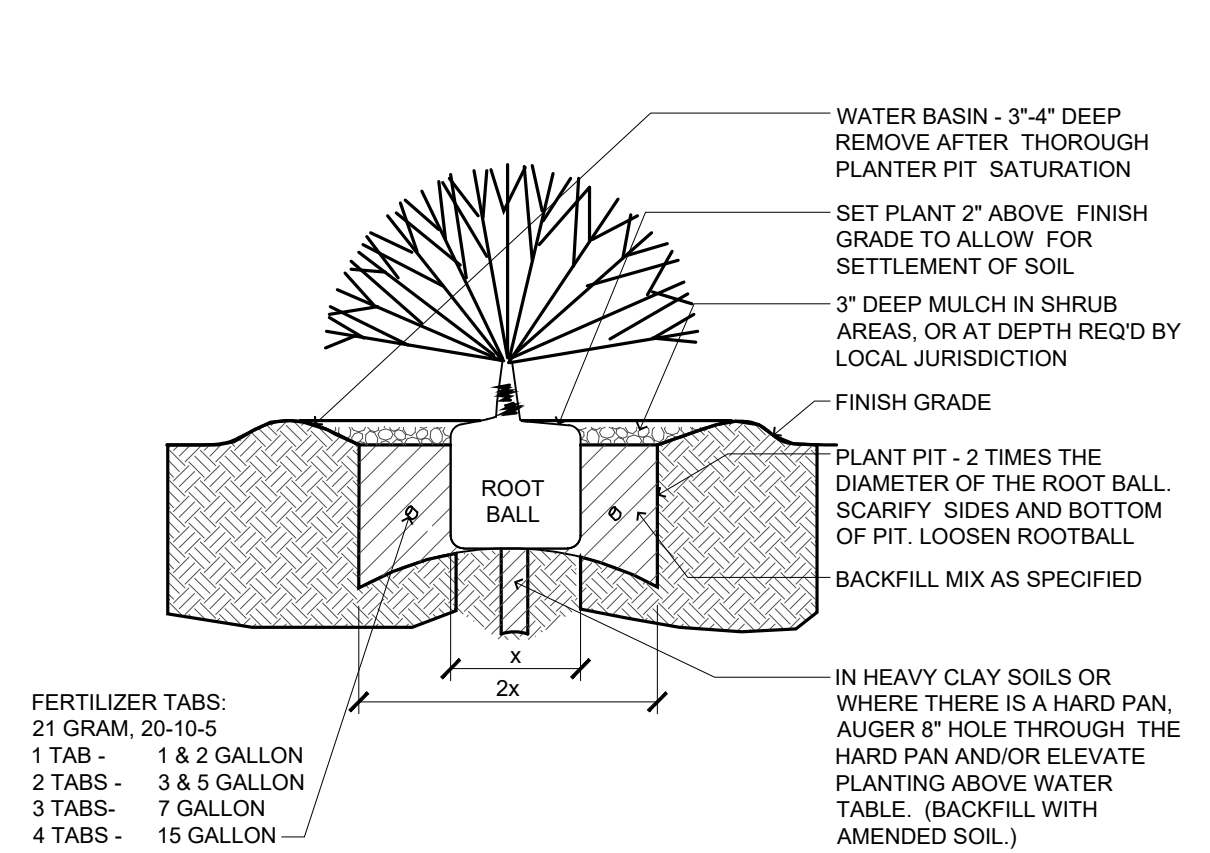


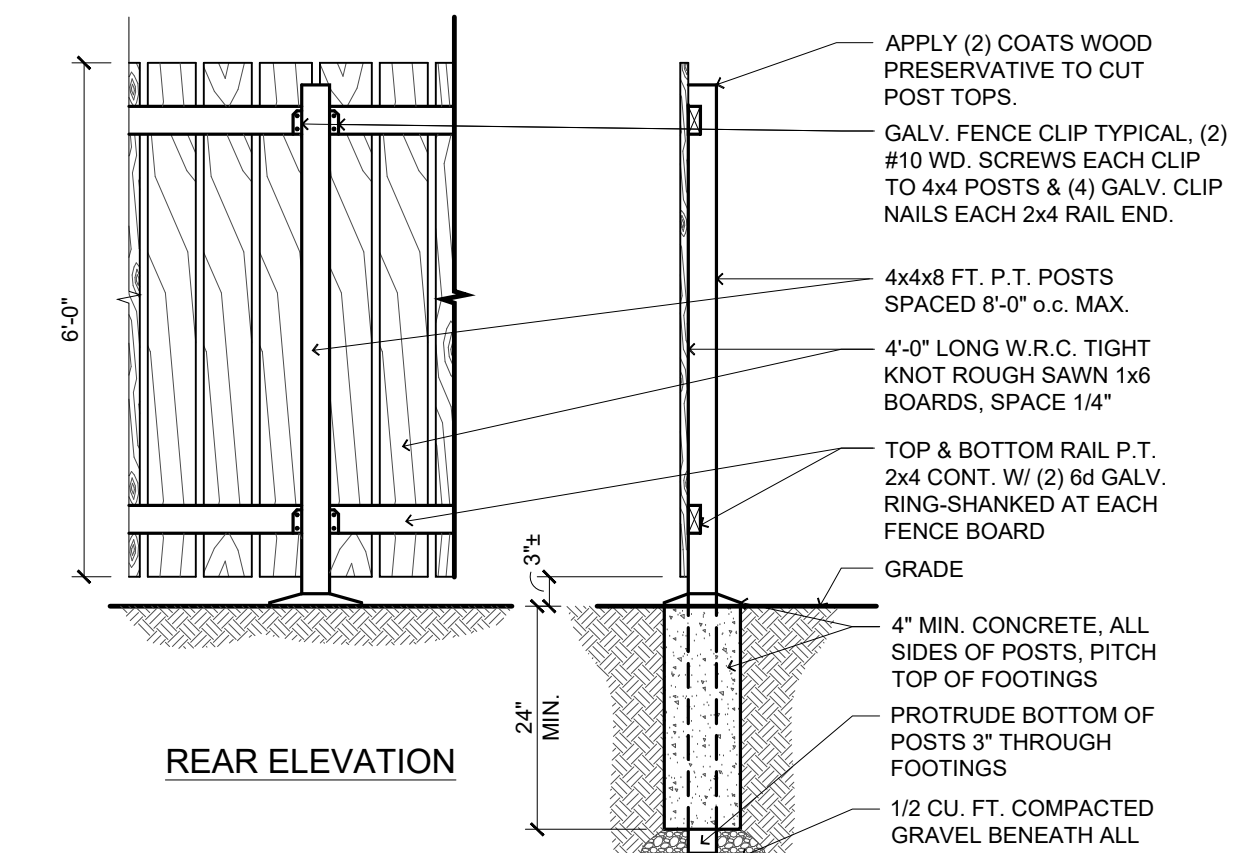
4 GROUNDCOVER PLANTING
EQUILATERAL TRIANGULAR SPACING
SCALE: NOT TO SCALE
T:\0251TEWK\220EXCAV\02220009



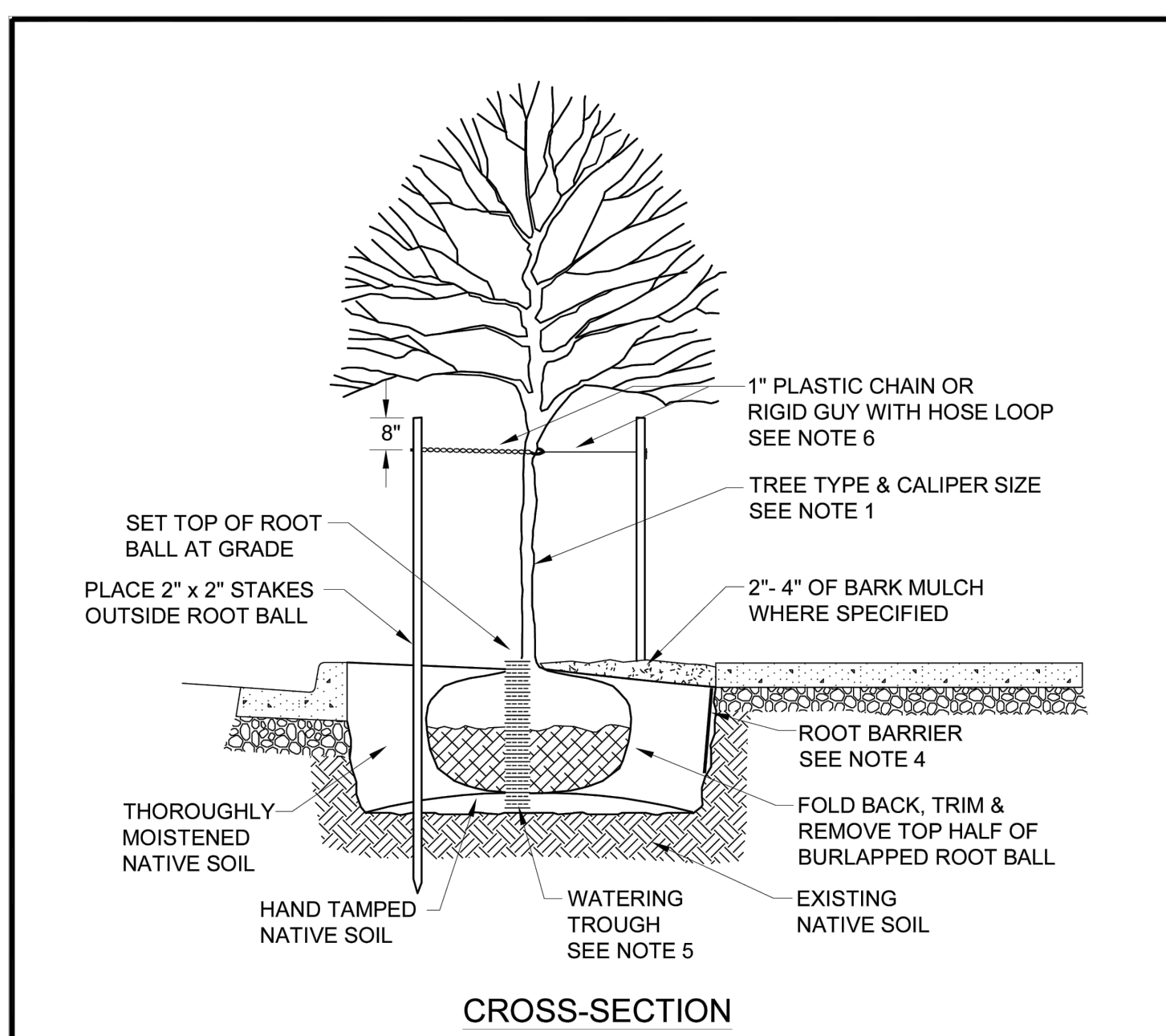
2 TREE PLANTING
(SECTION)
SCALE: NOT TO SCALE
TREE STAKING - PRIVATE



3 SHRUB/GROUNDCOVER PLANTING
(SECTION)
SCALE: NOT TO SCALE
T:\0251TEWK\220EXCAV\02220009



1 SCREEN FENCE
6 FT. CEDAR
SCALE: N.T.S.



- NOTES:**
1. Tree species and caliper size are to be approved by the City Arborist.
 2. Adjust planting locations so that tree crown or root ball does not conflict with above or below - ground utilities.
 3. Do not undermine curb or sidewalk when excavating.
 4. An 18 inches deep, root barrier shall be added where required by the City Arborist.
 5. Opposite tree stakes, provide two, 3 inch diameter ADS perforated pipe watering troughs, filled with pea gravel.
 6. Provide a loop in chain lock or guy hose large enough to allow for trunk growth.
 7. Tree stakes are to be removed following the required establishment period.

Beaverton ENGINEERING
STANDARD SIDEWALK TREEWELL
SCALE: NONE
DATE: JUNE 2018
240

TREE LEGEND

Symbol*	Botanical / Common Name	Quantity	Size	Mature Ht. x Wd.	Growth Rate / 15 yr. Crown	Species Distribution
STREET TREE						
●	Syrax japonicus 'Emerald Pagoda' Emerald Pagoda Japanese Snowbell Permitted under utility wires	3	2" cal. x 10-12 ft.	25 x 20	NA	NA
TREES (9' + planter)						
▲	Liriodendron tulipifera Tulip Tree	3	1.50" cal. x 8-10 ft.	70 x 40	Fast 40 ft.	13%
TREES (6' - 8'-11" planter)						
●	Ulmus americana 'Jefferson' Jefferson Elm	4	1.50" cal. x 8-10 ft.	65 x 55	Fast 50 ft.	17.5%
●	Zelkova serrata 'Green Vase' Green Vase Sawleaf Zelkova	4	1.50" cal. x 8-10 ft.	60 x 40	Fast 40 ft.	17.5%
TREES (4' - 5'-11" planter)						
●	Acer griseum Paperbark Maple	5	1.50" cal. x 8-10 ft.	25 x 20	Moderate 20 ft.	22%
●	Cladrastis kentuckea Yellow Wood	7	1.50" cal. x 8-10 ft.	40 x 40	Slow-Mod. 30 ft.	30%

* Tree symbols reduced in scale in legend
Note: All trees are selected from the City of Beaverton Tree List

EVERGREEN BUFFER SHRUBS

●	Osmanthus heterophyllus 'Goshiki' Holly-leaved Osmanthus	63	3 gal. container 5'-0" o.c.	6' x 5'
●	Viburnum tinus 'Spring Bouquet' Spring Bouquet Laurustinus	46	3 gal. container 5'-0" o.c.	7'-8" x 5'

GROUND COVER (plant in all parking lot planters and between shrubs in buffer areas)

●	Alyx replans 'Burgundy Lace' Carpet Bugle	100%	3.5" pots @ 18" o.c. coverage
---	--	------	----------------------------------

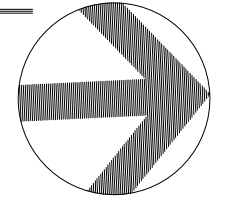
Note: Owner shall provide irrigation to all plants to develop vigorous root systems and continuously as needed through maturity.

SYMBOL / HATCH KEY	PROJECTED TREE GROWTH RATES	RETAINED TREE DATA
■	Fast growing trees: 4 ft. / year Moderate growing trees: 3 ft. / year Slow-Mod. growing trees: 2 ft. / year	Retained tree identification and numbers are derived from the Portland Tree Consultancy Arborist Report 1, dated 6/3/2021
○	Retained tree canopy or proposed parking lot tree canopy spread at 15 yr. growth.	Tree #2 Domestic Apple 22" Tree #5 Norway Maple 15" Tree #6 Domestic Apple 11" Tree #9 English Hawthorn 15" Tree #29 Sweet Cherry 13" Tree #35 Norway Maple 23"
■	Tree canopy coverage over parking and maneuvering area: 15,619 s.f. (40.3%)	

Note: No overlapping canopy area was used to satisfy the tree canopy area requirement.



PARKING LOT TREE CANOPY PLAN
DATE: 03/20/2024
1" = 20'
0 10 20 40 60



www.432024.6.01.PM.html 04/14/2024 10:00 AM.html 15660 SW Division Street - Beaverton, OR 97005 - lenityarchitecture.com - lenity11.1.dwg (1:1)